



# Human Trafficking

National Indian Gaming Commission  
Durant, OK  
July 18, 2017

---

---

---


---

---

---

---

---



Presented by:  
C. Renee Bourque, Supervisory Victim Specialist, BIA

---

---

---

---

---

---

---

---

## Learning Objective

**DISCLAIMER:** Some of the information that you will hear and view contains graphic images and language as the information is taken from actual web sites that are used in the solicitation process.

- Introduction to human trafficking in tribal communities.
  - Increase your awareness
    - Provide definitions of human trafficking
    - Learn how to identify potential victims
    - Understand the mindset of victims

---

---

---

---

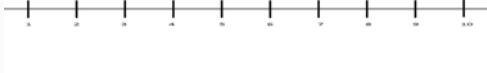
---

---

---

---

What is your knowledge on trafficking?



1 = lack any knowledge  
100 = know everything about trafficking

---

---

---

---

---

---

---

---

Exercise

---

---

---

---

---

---

---

---

Ask Yourself

- Do you believe that human trafficking is happening in your community?
- Could a homeless person or runaway be a victim of human trafficking?
- Are human trafficking victims drug addicts?

---

---

---

---

---

---

---

---

### True or False

- Is there human trafficking in Oklahoma?
- Is there trafficking in rural Oklahoma?
- Are prostitutes willing participants?
- Can children be prosecuted for prostitution?
- Is human trafficking prosecuted at the Federal level?
- Are all participants involved criminals?
- Does every jurisdiction have victim services for human trafficking victims?
- Do human trafficking victims want to be rescued?

---

---

---

---

---

---

---

---

### Understanding the Mindset of a Victim



- Victims often don't see themselves as victims.
- Victims may feel shame, self-blame and feeling of unworthiness
- Victims may be coached to lie (give fabricated histories/scripted stories)
- Victims are fearful and distrust law enforcement and government services due to fear of arrest.
- Victims may have formed a trauma bond with their exploiter and may have deep loyalties and positive feeling for their abuser.
- Drugs often play a role in sex trafficking situations- sometimes as a way to cope victims stay in "the life" to support a drug habit.

---

---

---

---

---

---

---

---

### Language

- **Pimp:** (Gorilla Pimp / Romeo Pimp) A person who controls and financially benefits from the commercial sexual exploitation of another person.
- **Bottom Bitch:** A female appointed by the trafficker/pimp to supervise the others and report rule violations. Also responsible for recruiting.
- **Branding:** A tattoo or carving on a victim that indicates ownership by a trafficker/pimp/gang.
- **Daddy:** The term a pimp will often require his victim to call him.
- **Date:** The exchange when prostitution takes place, or the activity of prostitution. A victim is said to be "with a date" or "dating." (John, Trick)

---

---

---

---

---

---

---

---

## Language continued

- **The LIFE:** The subculture of prostitution, complete with rules, a hierarchy of authority, and language. Women and girls will say they've been "in the life" if they've been involved in prostitution for a while.
- **Turn Out:** To be forced into prostitution or a person newly involved in prostitution.
- **Wife's/Wife-in-Law/Sister Wife:** What women and girls under the control of the same pimp call each other
- **Eyeballing:** A term which refers to the act of looking around instead of keeping your eyes on the ground. Eyeballing is against the rules and could lead an untrained victim to "choose up" by mistake.
- **Choosing Up:** The process by which a different pimp takes "ownership" of a victim

---

---

---

---

---

---

---

---

## Definitions

### **Sex Trafficking**

The recruitment, harboring, transportation, provision, obtaining, patronizing, soliciting, or advertising of a person for a commercial sex act induced by **force, fraud, or coercion**, or in which the person induced to perform such an act has not attained 18 years of age.

- Under 18 years of age it is a crime, and law enforcement does not have to prove force, fraud or coercion.

### **Labor trafficking**

The recruitment, harboring, transportation, provision, or obtaining of a person for labor or services, through the use of **force, fraud, or coercion** for the purpose of subjection to **involuntary** servitude, peonage, debt bondage, or slavery.

---

---

---

---

---

---

---

---

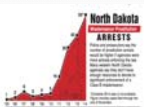
## Examples of Sex and Labor Trafficking

### **SEX TRAFFICKING:**

Child sex tourism, massage parlors, street prostitution, recruitment of tribal members from casinos into city limits; parents trading children for food, drugs, alcohol, wood, utilities, runaway or homeless youth (aging out of foster care) "man camps".

### **LABOR TRAFFICKING:**

Agriculture, begging/street peddling, beauty salons, construction, custodial work, elder care, exotic dancing, food industry/restaurant work, traveling sales crews, oil fields, etc.




---

---

---

---

---

---

---

---

**Native American Trafficking – Video (8:16)**




---

---

---

---

---

---

---

---

**Statistics**

- Trafficking is a continuation of a lengthy history for Native people, with colonization of America through wars, forced removal from homelands to reservations, boarding schools and forced urban relocation.

**Commercial Sex Trade Data**

- A review of community impact data taken from four formal studies demonstrates the disproportionate impact the commercial sex trade has on indigenous communities in both the U.S. and Canada.
  - In Hennepin County, Minnesota, roughly 25 percent of the women arrested for prostitution identified as American Indian while American Indians comprise only 2.2 percent of the total populations.
  - In Anchorage, Alaska, 33 percent of the women arrested for prostitution were Alaska Native, but Alaska Natives make up only 7.9 percent of the population.
  - Although many individuals involved in prostitution are not victims of sex trafficking, it is telling that Native women are so disproportionately represented among the population. It is necessary to examine what leads these women to this work and whether they have any other viable opportunities for economic advancement within their communities

Source: Human Trafficking Center Blog 2/14/17, Victoria Sweet, JD

---

---

---

---

---

---

---

---

**22 U.S. Code Chapter 78**

**Trafficking Victims Protection Act (TVPA)**

- The Trafficking Victims Protection Act is the most important anti-trafficking law ever passed. The TVPA, criminalized human trafficking with its passage in 2000 and establishes victim protection for men, and women, adults and children, citizens, and non-citizens alike.
- Establishes a three-prong approach prevention, protection and prosecution.
  - §7101. Purposes and findings
    - (a) The purposes of this chapter are to combat trafficking in persons, a contemporary manifestation of slavery whose victims are predominantly women and children, to ensure just and effective punishment of traffickers, and to protect their victims.

---

---

---

---

---

---

---

---

### A-M-P Model

Action*	Means **	Purpose
RECRUITS	<b>FORCE</b> Physical assault, sexual assault, confinement	A Commercial
HARBORS	<b>FRAUD</b> False promises about work/living conditions, withholding promised wages	Sex Act
TRANSPORTS	<b>COERCION</b> Threats of harm or deportation, debt bondage, psychological manipulation, confiscation of documents	Labor or Services
PROVIDES		
OBTAINS		

\* Additional actions that constitute sex trafficking, but not labor trafficking, include patronizing, solicits, and knowingly advertising.  
\*\* Neither force, nor fraud, nor coercion are required to be shown for minors under the age of 18 induced into commercial sex acts.

---

---

---

---

---

---

---

---

---

---

### Casino & Hotel Identifying Victims of Human Trafficking

- Guest appears to be disconnected from individual, family, friends, etc.,
  - May have visible brandings
  - Lacks luggage, overnight bag
  - Rents more than one room; (working/trafficker rooms)
    - May lack identification
    - Uses entrances other than the front door
- Controlled movement
- May refuse cleaning services
- When room is cleaned, there is an unusual amount of condoms, lubricant and hand towels
- May have several phones/laptops in the room
- May have excessive pornographic TV purchases
- Transactions are completed in cash

Reference: K. Brown (2007). Hotel & Casino PPT

---

---

---

---

---

---

---

---

---

---

### Human Trafficking in Montana: Part 2 (4:16)

Source: Completed at ABC FOX Montana, Great Falls, June 7, 2016

---

---

---

---

---

---

---

---

---

---

## What do you do?

**If you believe the person is in imminent danger, contact your local law enforcement or call 911**

- If the person is a minor, and child abuse or neglect is suspected:
  - contact your local/tribal/county social services or child protection agency.
- If the person is a minor and human trafficking is suspected:
  - contact your social services/child protection and local/tribal law enforcement.
- If the person is an adult and human trafficking is suspected:
  - contact the appropriate law enforcement agency in your area and victim service organization.

---

---

---

---

---

---

---

---

## How You Can Help

- Learn the indicators of human trafficking.
- Report suspicions to law enforcement by calling 911 or 24-hour National Human Trafficking Resource Center line at 1-888-373-7888.
- Volunteer and support anti-trafficking efforts in your community.
- Met with and/or write to your local, state, federal and tribal government representatives.
- Host an event to watch and discuss films about human trafficking.
- Work with local anti-trafficking agencies.
- Businesses: provide jobs, internships, skills training, and other opportunities to trafficking survivors.
- Train casino personnel.

---

---

---

---

---

---

---

---

## Oklahoma Information

- ARTICLE:  
<http://digitalcommons.law.ou.edu/cgi/viewcontent.cgi?article=1038&context=ailr>

**Oklahoma Programs Designed to Combat Human Trafficking:**  
 Oklahoma codified guidelines to assist victims of human trafficking. These guidelines include providing shelter that is not "inappropriate to their status as crime victims," neither penalizing nor criminalizing the victims for having been trafficked, providing prompt physical and emotional health care, and providing legal assistance. In addition to the guidelines for victim assistance, Oklahoma law mandates task forces designed to combat human trafficking. (OBNDD)

Source: American Indian Law Review, Volume 40/Number 2 – 2016 Human Trafficking Among Native Americans: How Jurisdictional and Statutory Complexities Present Barriers to Combating Modern-Day Slavery.

---

---

---

---

---

---

---

---



### Oklahoma Information continued

- Oklahoma contains one of the “largest concentrations of trafficked victims.” Oklahoma’s location makes the state optimal for human trafficking. Oklahoma is located in the center of the United States, where the intersections of major highways, such as I-40, I-44, and I-35, create a choice route for traffickers. Because traffickers typically prey on women who have lower education and fewer resources, Oklahoma became a prime target for seeking out women for commercial sex purposes. “Oklahoma ranks first in the nation in female incarceration and child abuse deaths, third in divorce, and fifth in teen” pregnancy. These statistics portray many Oklahoma women as vulnerable and susceptible to the business of commercial sex, given that these statistics correlate with the “risk factors” previously identified.

Source: American Indian Law Review, Volume 40/Number 2 - 2016 Human Trafficking Among Native Americans: How Jurisdictional and Statutory Complexities Present Barriers to Combating Modern Day Slavery

---

---

---

---

---

---

---

---

---

---

### Oklahoma Law Enforcement Resources

- Law Enforcement: OBNDH Human Trafficking Toll Free Hotline (855) 617-2288




---

---

---

---

---

---

---

---

---

---

### Oklahoma Victim Service Resources

Tribal Victim Services:  
**Native Alliance Against Violence**  
 623 North Porter, Suite 400  
 Norman, OK 73071  
 Telephone: 405-801-2277  
 FAX: 888-231-5714  
 Email: [info@OklahomaNAAV.org](mailto:info@OklahomaNAAV.org)

Resource List found on this link:  
<https://www.ok.gov/obndd/documents/HTTF%20-%20Resource%20Matrix%20Contact%20List%2003102014.pdf>

---

---

---

---

---

---

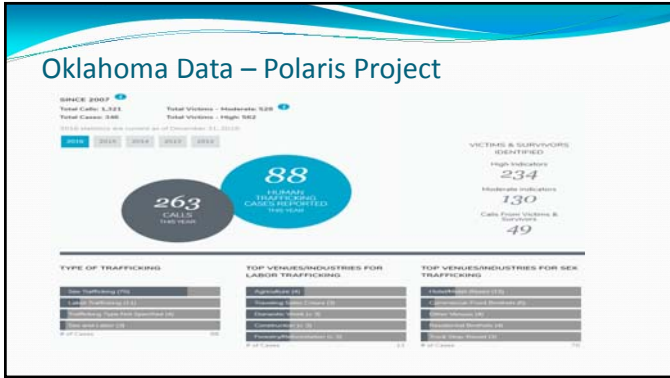
---

---

---

---






---

---

---

---

---

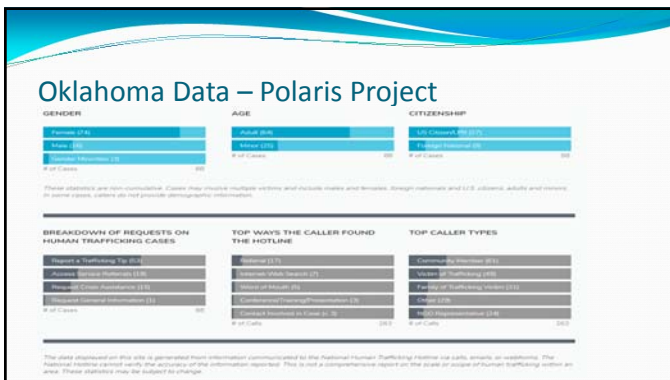
---

---

---

---

---




---

---

---

---

---

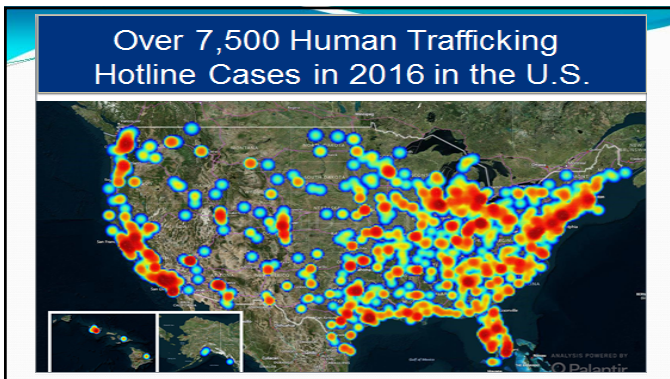
---

---

---

---

---




---

---

---

---

---

---

---

---

---

---

**Polaris**  
Freedom begins now.

**Polaris-Operated Anti-Human Trafficking Hotlines**

**NATIONAL  
SLAVES  
TRAFFICKING  
HOTLINE**  
1-888-373-7888

---

---

---

---

---

---

---

---

**Contact the National Hotline?**

A NATIONAL HOTLINE AND RESOURCE CENTER

**1-888-373-7888**

CONFIDENTIAL | TOLL-FREE | 24/7

**Contact the National Hotline**

- CALL TOLL-FREE: 1-888-373-7888 ext. 200 (English)
- SEND AN EMAIL: [help@polaris.org](mailto:help@polaris.org) or [info@polaris.org](mailto:info@polaris.org)
- REPORT A TIP ONLINE: [www.polaris.org/submit-tip](http://www.polaris.org/submit-tip)
- VISIT THE BEFREE WEB PORTAL: [www.befree.org](http://www.befree.org)

---

---

---

---

---

---

---

---

**Contact BEFREE**

Text "HELP" or "INFO" to:

**233733 (BEFREE)**

CONFIDENTIAL | MON-SUN | 3-11PM

---

---

---

---

---

---

---

---

Questions

---

---

---

---

---

---

---

---

Thank you

C. Renee Bourque  
 Supervisory Victim Specialist  
 BIA-OJS Victim Assistance Program  
 District I (North/South Dakota and Nebraska)  
 304 E. Broadway, Suite 354  
 Bismarck, ND 58503  
 701-258-3760 office  
 605-407-7707 mobile  
[Cheryl.Bourque@bia.gov](mailto:Cheryl.Bourque@bia.gov)

---

---

---

---

---

---

---

---

**Course Evaluation**

- Provide an honest assessment of your experience
- Written suggestions and comments are greatly appreciate and allow us to improve your experience

---

---

---

---

---

---

---

---

**Course Eval - Human Trafficking**  
When survey is active, respond at [PollEv.com/nlgc](http://PollEv.com/nlgc)

**Start the presentation to activate live content**  
If you see this message in presentation mode, you're all set to go! Or get help at [PollEv.com/app](http://PollEv.com/app)  
© 2016 surveys underway

---

---

---

---

---

---

---

---