



# Human Trafficking

National Indian Gaming Commission  
Grand Ronde, OR  
June 6, 2017

---

---

---


---

---

---

---

---



Presented by:  
C. Renee Bourque, Supervisory Victim Specialist, BIA

---

---

---

---

---

---

---

---

## Learning Objective

Please understand that some of the information that you will hear and view contains graphic images and language as the information is taken from actual web sites that are used in the solicitation process.

- Introduction to human trafficking in tribal communities.
  - Increase your awareness
  - Provide definitions of human trafficking
  - Learn how to identify potential victims
  - Understand the mindset of victims

---

---

---

---

---

---

---

---

**Ask Yourself**

- Do you believe that human trafficking is happening in your community?

---

---

---

---

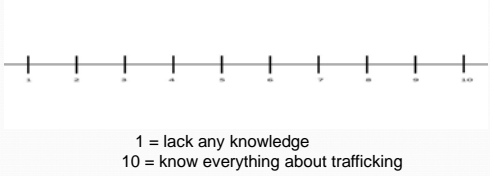
---

---

---

---

**What is your knowledge on trafficking?**



1 = lack any knowledge  
10 = know everything about trafficking

---

---

---

---

---

---

---

---

**True or False**

- Is there Human Trafficking in Grande Ronde or the surrounding area?
- Are prostitutes willing participants?
- Can children be prosecuted for prostitution?
- Is Human Trafficking prosecuted at the Federal level?
- All participants involved are criminals?
- Every jurisdiction has victim services for Human Trafficking victims?
- Human Trafficking victims want to be rescued?

---

---

---

---

---

---

---

---

### Language

- **Pimp:** (Gorilla Pimp / Romeo Pimp) A person who controls and financially benefits from the commercial sexual exploitation of another person.
- **Bottom Bitch:** A female appointed by the trafficker/pimp to supervise the others and report rule violations.
- **Branding:** A tattoo or carving on a victim that indicates ownership by a trafficker/pimp/gang.
- **Daddy:** The term a pimp will often require his victim to call him.
- **Date:** The exchange when prostitution takes place, or the activity of prostitution. A victim is said to be "with a date" or "dating." (John, Trick)

---

---

---

---

---

---

---

---

### Language continued

- **The LIFE:** The subculture of prostitution, complete with rules, a hierarchy of authority, and language. Women and girls will say they've been "in the life" if they've been involved in prostitution for a while.
- **Turn Out:** To be forced into prostitution or a person newly involved in prostitution.
- **Wifey's/Wife-in-Law/Sister Wife:** What women and girls under the control of the same pimp call each other

---

---

---

---

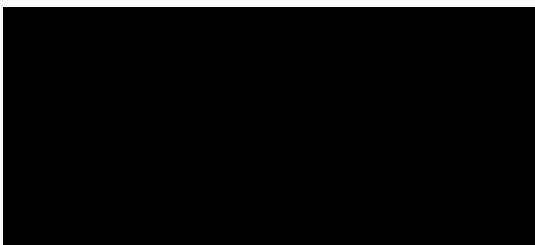
---

---

---

---

### Native American Trafficking – Video (8:16)



---

---

---

---

---

---

---

---

### Statistics

- Trafficking is a continuation of a lengthy history for Native people, with colonization of America through wars, forced removal from homelands to reservations, boarding schools and forced urban relocation.

#### Commercial Sex Trade Data

- A review of community impact data taken from four formal studies demonstrates the disproportionate impact the commercial sex trade has on indigenous communities in both the U.S. and Canada.
  - In Hennepin County, Minnesota, roughly 25 percent of the women arrested for prostitution identified as American Indian while American Indians comprise only 2.2 percent of the total populations.
  - In Anchorage, Alaska, 33 percent of the women arrested for prostitution were Alaska Native, but Alaska Natives make up only 7.9 percent of the population.

---

---

---

---

---

---

---

---

### Statistics (cont.)

- Canadian studies show similar results.
  - In Winnipeg, 50 percent of adult sex workers were defined as Aboriginal, while Aboriginal peoples comprise only 10 percent of the population and 52 percent of the women involved in the commercial sex trade in Vancouver were identified as First Nations, while First Nations people comprise only 7 percent of the general population.
  - Although many individuals involved in prostitution are not victims of sex trafficking, it is telling that Native women are so disproportionately represented among the population. It is necessary to examine what leads these women to this work and whether they have any other viable opportunities for economic advancement within their communities.

Source: Human Trafficking Center Blog 2/14/17, Victoria Sweet, JD

---

---

---

---

---

---

---

---

### 22 U.S. Code Chapter 78

#### Trafficking Victims Protection Act (TVPA)

- The Trafficking Victims Protection Act is the most important anti-trafficking law ever passed. The TVPA, criminalized human trafficking with its passage in 2000 and establishes victim protection for men, and women, adults and children, citizens, and non-citizens alike.
- Establishes a three-prong approach prevention, protection and prosecution.
  - §7101. Purposes and findings
    - (a) The purposes of this chapter are to combat trafficking in persons, a contemporary manifestation of slavery whose victims are predominantly women and children, to ensure just and effective punishment of traffickers, and to protect their victims.

---

---

---

---

---

---

---

---

### Definitions

**Sex Trafficking**  
 The recruitment, harboring, transportation, provision, obtaining, patronizing, soliciting, or advertising of a person for a commercial sex act induced by **force, fraud, or coercion**, or in which the person induced to perform such an act has not attained 18 years of age.

- Under 18 years of age it is a crime, and law enforcement does not have to prove force, fraud or coercion.

**Labor trafficking**  
 The recruitment, harboring, transportation, provision, or obtaining of a person for labor or services, through the use of **force, fraud, or coercion** for the purpose of subjection to **involuntary** servitude, peonage, debt bondage, or slavery.

---

---

---

---

---

---

---

---

### Examples of Sex and Labor Trafficking

**SEX TRAFFICKING:**  
 Child sex tourism, massage parlors, street prostitution, recruitment of tribal members from casinos into city limits; parents trading children for food, drugs, alcohol, wood, utilities, runaway or homeless youth (aging out of foster care) "man camps".

**LABOR TRAFFICKING:**  
 Agriculture, begging/street peddling, beauty salons, construction, custodial work, elder care, exotic dancing, food industry/restaurant work, traveling sales crews, oil fields, etc.






---

---

---

---

---

---

---

---

### A-M-P Model

Action*	Means **	Purpose
RECRUITS	<b>FORCE</b> Physical assault, sexual assault, confinement	A Commercial
HARBORS	<b>FRAUD</b>	Sex Act
TRANSPORTS	False promises about work/living conditions, withholding promised wages	Labor or
PROVIDES	<b>COERCION</b>	Services
OBTAINS	Threats of harm or deportation, debt bondage, psychological manipulation, confiscation of documents	

\* Additional actions that constitute sex trafficking, but not labor trafficking, include patronizing, solicits, and knowingly advertises.  
 \*\* Neither force, nor fraud, nor coercion are required to be shown for minors under the age of 18 induced into commercial sex acts.

---

---

---

---

---

---

---

---

### Casino & Hotel Identifying Victims of Human Trafficking

- Guest appears to be disconnected from individual, family, friends, etc.,
  - May have visible brandings
  - Lacks luggage, overnight bag
  - Rents more than one room; (working/trafficker rooms)
    - May lack identification
    - Uses entrances other than the front door
- Controlled movement
- May refuse cleaning services
- When room is cleaned, there is an unusual amount of condoms, lubricant and hand towels
- May have several phones/laptops in the room
- May have excessive pornographic TV purchases
- Transactions are completed in cash

Reference: K. Brown (2017). Hotel & Casino PPT

---

---

---

---

---

---


---

---

---

---


### Who Are the Victims



They look for people who are susceptible including: Poverty, psychological or emotional vulnerability, economic hardship, lack of social net, suffered multiple victimizations, substance/alcohol abuse, homeless/runaways, etc.

The trauma caused by the traffickers can be so great that many may not identify themselves as victims or ask for help, even in highly public settings.

- Recruitment by "Romeo/boyfriend" pimps
- Gang related prostitution
- Parent or family member pimping for drugs/money




---

---

---

---

---

---




---

---

---

---

### Understanding the Mindset of a Victim

- Victims often don't see themselves as victims.
- Victims may feel shame, self-blame and feeling of unworthiness
- Victims may be coached to lie (give fabricated histories/scripted stories)
- Victims are fearful and distrust law enforcement and government services due to fear of arrest.
- Victims may have formed a trauma bond with their exploiter and may have deep loyalties and positive feeling for their abuser.
- Drugs often play a role in sex trafficking situations- sometimes as a way to cope or victims sometimes enter "the life" to support a drug habit.

---

---

---

---

---

---

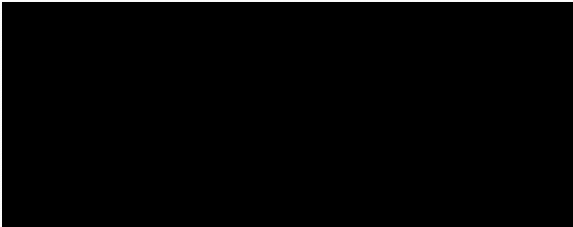
---

---

---

---

**Human Trafficking in Montana: Part 2 (4:16)**



Source: Completed at ABC FOX Montana, Great Falls, June 7, 2016

---

---

---

---

---

---

---

---

**What is the Connection**

- Intimate partner violence is NOT asked for.
- Human trafficking is NOT voluntary.
- Perpetrators use a relationship of trust to their advantage (e.g. economic gain through a girlfriend or employee).
- Abusers and traffickers can be anyone.
- Victims can be ANYONE (e.g. children, women and men of all nationalities, socio-economic status, race, age, and faith).
- Perpetrators and traffickers often threaten victims into a life of silence and compliance.
- Intimate partner violence and human trafficking violate a person's freedom.
- Victims may have experienced attacks of violence across their lifespan: street violence; sexual assault, war; political turmoil

**Victims/survivors need assistance from various people, agencies, and organizations.**

---

---

---

---

---

---

---

---

**What do you do?**

**If you believe the person is in imminent danger, contact your local law enforcement or call 911**

- If the person is a minor, and child abuse or neglect is suspected:
  - contact your local/tribal/county social services or child protection agency.
- If the person is a minor and human trafficking is suspected:
  - contact your social services/child protection and local/tribal law enforcement.
- If the person is an adult and human trafficking is suspected:
  - contact the appropriate law enforcement agency in your area and victim service organization.

---

---

---

---

---

---

---

---



### How You Can Help

- Learn the indicators of human trafficking.
- Report suspicions to law enforcement by calling 911 or 24-hour National Human Trafficking Resource Center line at 1-888-373-7888.
- Be a conscientious and informed consumer.
- Volunteer and support anti-trafficking efforts in your community.
- Met with and/or write to your local, state, federal and tribal government representatives.
- Host an event to watch and discuss films about human trafficking.
- Be well-informed.
- Work with local religious communities.
- Businesses: provide jobs, internships, skills training, and other opportunities to trafficking survivors.
- Train Casino Personnel – employee orientation, badge replacement, etc.

---

---

---

---

---

---

---

---

### Oregon Facts




---

---

---

---

---

---

---

---

### Human Trafficking & Native People in Oregon: A Human Rights Report



<http://willamette.edu/law/pdf/hrc/human-trafficking-native-peoples.pdf>

---

---

---

---

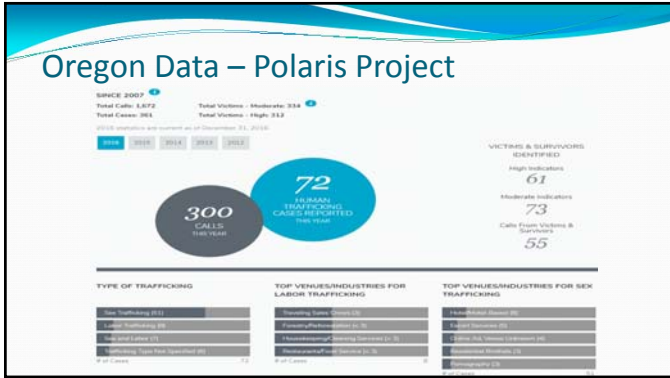
---

---

---

---





---

---

---

---

---

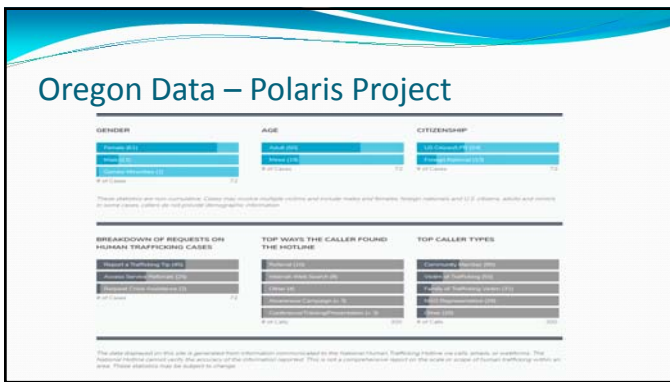
---

---

---

---

---



---

---

---

---

---

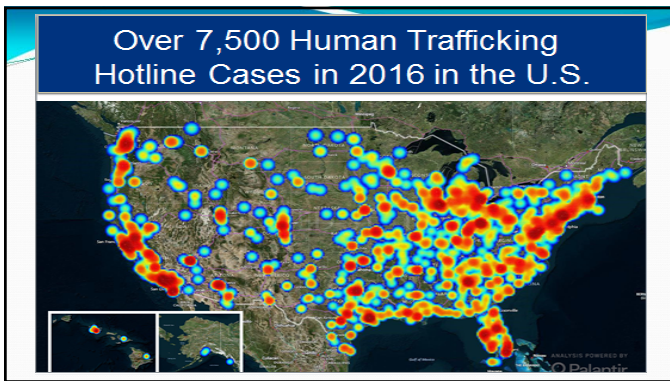
---

---

---

---

---



---

---

---

---

---

---

---

---

---

---

**Polaris**  
Freedom begins now.

**Polaris-Operated Anti-Human Trafficking Hotlines**

**NATIONAL  
SLAVES  
TRAFFICKING  
HOTLINE**  
1-888-373-7888

---

---

---

---

---

---

---

---

**Contact the National Hotline?**

A NATIONAL HOTLINE AND RESOURCE CENTER

**1-888-373-7888**

CONFIDENTIAL | TOLL-FREE | 24/7

**Contact the National Hotline**

- CALL TOLL-FREE: 1-888-373-7888 ext. 247 in 200 languages
- SEND AN EMAIL: [help@polaris.org](mailto:help@polaris.org) or [info@polaris.org](mailto:info@polaris.org)
- REPORT A TIP ONLINE: [www.polaris.org/tip](http://www.polaris.org/tip)
- VISIT THE BEFREE WEB PORTAL: [www.befree.org](http://www.befree.org)

---

---

---

---

---

---

---

---

**Contact BEFREE**

Text "HELP" or "INFO" to:

**233733 (BEFREE)**

CONFIDENTIAL | MON-SUN | 3-11PM

---

---

---

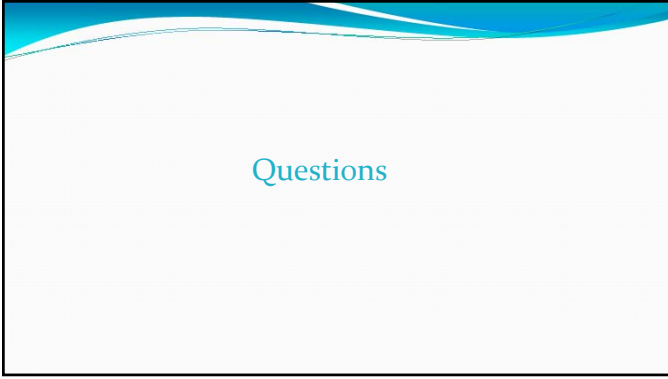
---

---

---

---

---



---

---

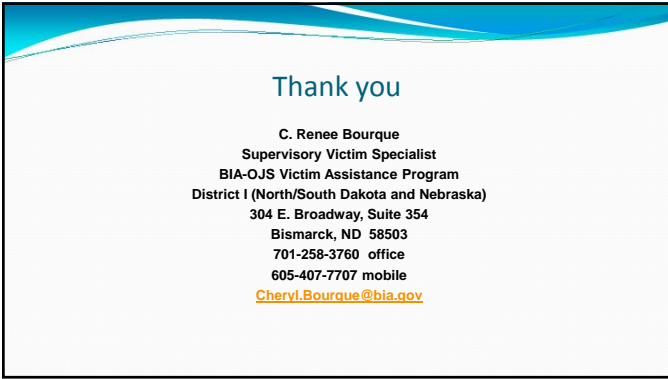
---

---

---

---

---



---

---

---

---

---

---

---